



Hanstholm, Denmark

28th April – 02nd May 2021

Bulletin 1+2

MTBO Camp is an early season event, with a lot of MTBO, socializing, high-intensity competitions and low-intensity technical trainings.

Covid 19

As we can foresee Covid 19 restrictions will still be active, the number of participants will be limited to 150 – with this number we assume we can handle eventual restrictions.

The organizers will publish the latest Covid 19 restrictions in Bulletin 3. It is very important that you as a participant will follow these restrictions in order to keep the Camp safe. The organizers will of course help you with these restrictions. But, in the end YOU are responsible following these restrictions.

The organizers will highly recommend the participants to get a Corona test no later than 4 days before the event. In order to protect the rest of the participants and yourself.

Organizers:	Mariager Fjord OK & Navet		Web-page	http://mtbocamp.dk
Event Directors:	Jørn Svensen & Bjarne Hoffmann		Facebook:	https://www.facebook.com/mtbocamp/
Course setter:	Bjarne Hoffmann & Johan McLassen		Telephone:	+45 40446999
Map maker:	Erik Flarup		E-mail:	info@mtbocamp.dk

Contents

Welcome	3
Venue/Event center	3
Highlights of North Jutland	4
Accommodation	4
Price giving	4
Rules / Doping	4
Program (preliminary).....	5
Classes	5
Competition information	5
Maps/Terrain	6
WED 28 April Shortened Middle distance Legindbjerg.	6
THU 29 April Long distance Svinkløv/Kollerup	6
THU 29 April Training Kollerup	7
FRI 30 April Middle distance Vandet	7
FRI 30 April Training Vandet	7
SAT 01 May Ultra Long distance Jutland	7
SUN 02 MAY Middle distance Vilsbøl plantage	8
Time keeping.....	8
Entry fees and deadlines.	9
Danish participants:.....	9
Foreign participants:	10
Complete camp:	Error! Bookmark not defined.
Single day entries: (Sign in no later than 23rd of April)	10
Transportation	10
Entry permits (Visas)	10
More information	10
Bulletins.....	11

Welcome

Welcome to the MTBO-camp. The organizing team warmly welcomes you to this special covid 19 2021 edition of “Danish MTBO camp”. It has become a tradition with a season-opening training camp in Denmark offering mapping and course-setting of the highest standard. The 2021-event will not let you down! On behalf of the organizing team, we welcome you to the North Western part of Jutland Denmark.

Jørn Svensen and Bjarne Hoffmann

Event Directors

Venue/Event center

Hanstholm Camping
Hamborgvej 95
7730 Hanstholm
Danmark

At arrival at the Camping site (Hanstholm camping) you should follow the signs from the main gate to the camp office (Cabin 50). The camp office is manned the following hours:

Wednesday 28 April: 1200- 1500

Thursday 29 April: 0800-0900 and 1800-2000

Friday 30 April: 0800-0900 and 1800-2000

Saturday 01 May: 0800-0900 and 1800-2000

Sunday 02 May: 0630-0800

It is also possible to meet directly at the training at Legind Bjerge.
There will be an event office to help you from 1600.

Highlights of North Jutland

North Jutland offers unique nature areas, art and culture, all in a class of their own, and of course lots of attractions you should not miss out on. The experiences are lined up for you and we have gathered some of the highlights for you to explore, on this page



More information : <https://www.visitnordjylland.com/>

Accommodation

The camp organizer is not responsible for the accommodation.

Price giving

There will be no price for winning your races. Except the honor of course. Instead, we have decided to make a lottery of all our sponsored gifts and the winners can collect their prizes at the competition center. The list will be published the 28th of April.

Rules / Doping

Riding off the tracks is strictly forbidden. Violation of this rule may, if done deliberately, result in exclusion from the camp without compensation.

The organizers will not be liable for any health insurance for participants. It is recommended that all participants arrange their own personal health insurance. Participation is at own risk.

Sales of any kind is not allowed at the competitions or at the Event Center unless you have made an agreement with the organizers

Doping is strictly prohibited.

Program (preliminary)

Date	Terrain	Distance from EC
28 April	Legind Bjerge Middle distance.	52 km
29 April	Morning Svinkløv. Long distance (Young Guns Series, World Masters Series)	52 km
	Afternoon Kollerup. Technical Training	48 km
30 April	Morning Vandet plantage. Middle distance (Young Guns Series, World Masters Series)	21 km
	Afternoon Vandet. Technical Training	
01 May	Ultra Long distance. Somewhere in the North western part of Jutland	Somewhere
02 May	Vilsbøl. Medium distance. First start 0800	21 km

Classes

These classes apply to the ordinary classes in the international competitions and your entry applies for all these competitions. You cannot change from one class to another during the Camp.

1. ME
2. WE,M 20,M35,M40,M45
3. M17,M50,M55
4. W20,W35,W40,W45,M60,M65
5. W17,W50,W55,W60,W65,W/M70,W/M75,W/M80,W/M85
6. W/M14
7. W/M11

Competition information

Races Thursday, 29 of April (Long distance Svinkløv) and Friday, 30 of April (Middle distance Vandet plantage) will be a part of Young Guns and Masters Series.

Maps/Terrain

WED 28 April

Shortened Middle distance Legindbjerge.

Venue: Legindvej 30, 7900 Nykøbing Mors.

Toilets not available.

Direction: Signs on road A 26.

Map: Legindbjerge 2021 1:7500, 2,5 m A4/A3 size.

Start: 1700-1900. Free start. There is no start list. The organizers will make sure that the start interval in the different classes will be 1 minute. All riders must be finish at **2030**.



THU 29 April

Long distance Svinkløv/Kollerup

Venue: Brøndumvej 25, 9690 fjerritslev.

Toilets available.

Direction: Will be published in Bulletin 3.

Map: Svinkløv 2021 1:10000, 2,5 m A3 size. Kollerup 2021 1:7500, 2,5 m A4/A3 size.

Start: 1000-1200. Follow the start list.

All riders must be finish at **1530**. M/W 11 and M/W14 will start at start 2.



A part of the World Masters and Young Guns Series.

THU 29 April

Training Kollerup

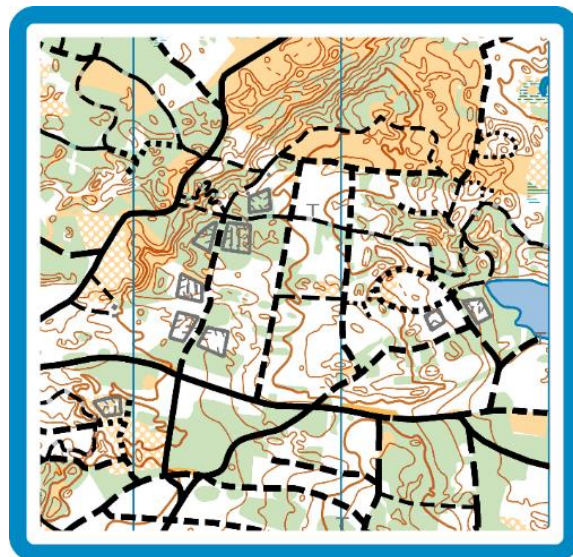
Venue: Brøndumvej 25 9690 fjerritslev.

Direction: Same venue as the Long distance.

Map: Kollerup 2021 1:7500, 2,5 m A4/A3 size.

Start: 1500-1700. Free start. All riders must be finish at **1700**.

Training Focus: Will be published in Bulletin 3.



FRI 30 April

Middle distance Vandet

Venue: Tandrupvej 1, 7700 Thisted.

Direction: Signs on Klitmøllervej Mainroad 557.

Map: Vandet 2021 1:10000, 2,5 m A3 size.

Start: 1000-1200. Follow the start list.
All riders must be finish at **1400**.

Part of the World Masters and Young Guns Series.



FRI 30 April

Training Vandet

Venue: Parking lot on Vandetvej.

Direction: Signs on Klitmøllervej Mainroad 557.

Map: Vandet 2021 1:10000, 2,5 m A3 size.

Start: 1300-1500. Free start. All riders must be finish at **1500**.

Training Focus: Will be published in Bulletin 3.



SAT 01 May

Ultra Long distance Jutland

Venue: Will be published in Bulletin 3.

Direction: Will be published in Bulletin 3.

Map: Everywhere that Tommy decides you should ride your bike.

Different scales.

Start: 0900. Follow the startlist.

All riders must be finish at **1500**.

SUN 02 MAY

Middle distance Vilsbøl plantage

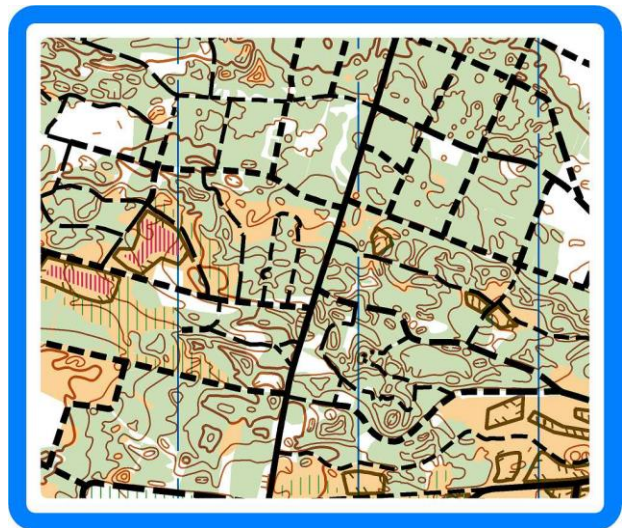
Venue: Will be published in Bulletin 3.

Direction: Will be published in Bulletin 3.

Map: Vilsbøl 2021 1:7500, 2,5 m A4/A3 size.

Start: 0900-1100. There will be a start list. All riders must be finish at **1300**.

The maps are produced in accordance with the International Standard for Mountain Bike Orienteering Maps ISMTBOM 2010 and later amendments. All maps will be updated April 2021 by Erik Flarup.



Time keeping

SPORTident Air will be used in all competitions/training. All competitors will have to use an SI Card. SIAC rental will be possible.

Entry fees and deadlines.

Number of participants is limited to 150

Because of the unclear situation in connection with the Covid 19, we have decided to do the entry in the following way.

Danish participants:

1. Member of a Danish Orienteering Club sign in through **O-service**. Also for single day entry.
2. **Non member** of a Danish Orienteering Club through the following link:

<http://mtbocamp.dk/mtbo-camp-2021/signup/>

Fill in the required information. Entries are published on the website immediately.

Payment details:

Reg nr. 9570 Account no. 13198012

Danske bank

Please write your name in the transfer, so the organizer can get a view of who the transfer is from.

	M/W-14	M/W-20	M/W 21-
Danish participants			
Entry fee until 10th of April 2021 Per person/participant	DKK 150	DKK 600	DKK 825
Late entry 11th – 26st of April 2021 Per person/participant	DKK 190	DKK 825	DKK 1090
SI card – rental for all competitions	DKK 150	DKK 150	DKK 150
Foreign participants	EUR 20 DKK 150	EUR 80 DKK 600	EUR 110 DKK 825
SI card – rental for all competitions	EUR 20 DKK 150	EUR 20 DKK 150	EUR 20 DKK 150

In case of cancellation of the event due to Covid 19 restrictions. The organizer will refund the entry above 150 DKK back to participants. The 150 DKK will be used to cover the expenses that the organizers already have used to get the camp ready. This amount is not refundable. At the moment this is not likely to happen.

Foreign participants full camp:

1. Pay at arrival.

<http://mtbocamp.dk/mtbo-camp-2021/signup/>

Fill in the required information. Entries are published on the website immediately.

For M/W 11 participating is for free.

Foreign participant single day entries: (Sign in no later than 26th of April)

Single day entries will be offered, for all the races, and training. If you don't want to participate in the whole camp, but you just want to participate in a single training or at Young Guns, World Masters Series. To help the organizers, please make your entry by email to competitiondirector@mtbocamp.dk, including all the information's given in the normal registration form. Also register the class you want to participate in. The same classes as the classes in the full Camp.

Hence: only use the registration form on the website (<https://mtbocamp.dk/mtbo-camp2021/signup/>)

Entry fee for 1-day entry is EUR 20 per race/training for M/W-14 and M/W-20.
And EUR 25 per race/training for M/W-21 to M/W 85.

Deadline for single day entry is 26th of April.

Withdrawals:

Withdrawals will be accepted as follows:

- Until 10th of April withdrawals receive a 50 % refund. No refund to M/W-14.
- After 10th of April withdrawals will not be accepted.

Transportation

The organizers do not offer transportation during the Camp. Competitors/participants must arrange own transportation.

Entry permits (Visas)

Denmark is a full Schengen member state. Non-Schengen residents may have to apply for a short stay visa.

More information

Webpage <http://www.mtbocamp.dk>

Facebook <https://www.facebook.com/mtbocamp/>



(Please visit and “like” to get regular updated information)

Bulletins

#3 will be published the 14th of April 2021.