

# MTBO CAMP

2025 - Småland - Sweden - by Nybro OK & Lessebo OK

29 May -1 june 2025

## BULLETIN #1

MTBO Camp is an early season event with a lot of MTBO, socializing, high-intensity competitions and low-intensity technical training sessions

Organizers	Lessebo OK, Nybro OK
Event Director	Sonny Myrefelt, <a href="mailto:eventdirector@mtbocamp.dk">eventdirector@mtbocamp.dk</a>
Webpage	<a href="http://mtbocamp.dk">http://mtbocamp.dk</a>
Facebook	<a href="https://www.facebook.com/mtbocamp/">https://www.facebook.com/mtbocamp/</a>
E-mail	<a href="mailto:info@mtbocamp.dk">info@mtbocamp.dk</a>
Sponsors	  



**MTBO i  
Glasriket**



## CONTENTS

CONTENTS .....	2
WELCOME.....	3
VENUE .....	3
EVENT CENTER AND GENERAL MAP .....	4
HOW TO GET TO KOSTA.....	6
PRELIMINARY PROGRAM .....	7
DISTANCES.....	7
ENTRY .....	7
CLASSES .....	7
FEES and PAYMENT .....	8
MAPS.....	10
TIME KEEPING SYSTEM .....	10
ONE DAY PARTICIPATION .....	10
SOCIAL EVENT and PRIZE GIVING .....	10
VISA .....	10
ACCOMMODATION .....	11
ACCOMODATION AT THE EVENT CENTER .....	11
KOSTA LODGE .....	11
KOSTA BODA ART HOTEL.....	11
CAMPING.....	11
AUTOCAMPER.....	11
EATING .....	12
MORE INFORMATION.....	12
BULLETINS.....	12



**MTBO i  
Glasrieket**

**MTBO CAMP**



## WELCOME

The organizing team warmly welcomes you to the 2025 special, Swedish edition of MTBO camp. It has become a tradition with a season opening training camp offering maps and course-setting of the highest standard. The 2025 event will not let you down! We have found and mapped new, virgin MTBO terrains in nice typical Smålands terrain just around Kosta -Lessebo-Orrefors and Målerås.

On behalf of the organizing team, we welcome you to the Southeast of Sweden, the center of the kingdom of Glass, Glasrieket.

This is a TRAINING CAMP but includes also race competition.

## VENUE

### Sweden

Situated in Scandinavia, the Kingdom of Sweden covers an area of 528,000 square kilometers and with a population of 10,5 million, the population density is 22 per square kilometer. You will discover Sweden to be a well-organized, friendly and safe country to visit. Sweden is so long that its northern parts may still be covered in snow when the southern end is in bloom. More than two-thirds of the land area is covered in forest and there are nearly 100,000 lakes. The south of Sweden has an average daily temperature 16,6 °C in the end of May. More info: [Väder i Kosta, Lessebo \(smhi.se\)](#)

### Småland

Småland is one of 25 landscape in Sweden and is situated in the southeast of Sweden.

### Kingdom of Glass- southeast Sweden

Småland's Kingdom of Glass has been creating magic since 1742. The unique art glass is famous worldwide and the craft can be found in many Swedish homes. Here you meet the craftsmen and artists. [Experience the Kingdom of Glass - Kingdom of Glass \(glasrieket.se\)](#)

At most glassworks, it is fine to step into the cabin and take part in the work. And maybe try the noble art of glassblowing yourself.

You can also shop for unique glass, sometimes at bargain prices.





**MTBO i  
Glasriket**

**MTBO CAMP**



## EVENT CENTER AND GENERAL MAP

### EVENT CENTER



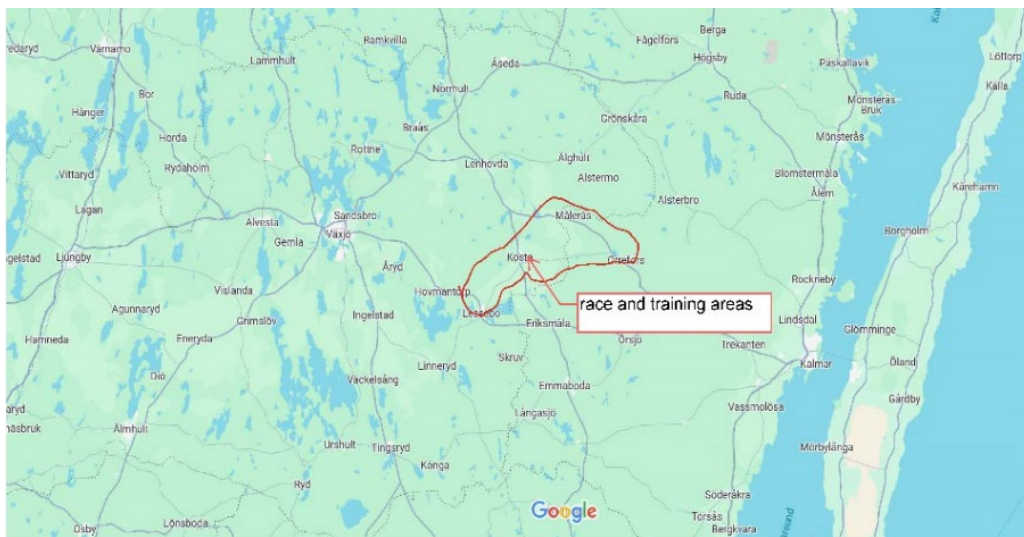
The event center will be at Kosta Lodge, Stora vägen 2, 365 43 Kosta, Sweden.

[Kosta Lodge - stugor, konferens, ställplats & fiske mitt i Glasriket](#)

<https://maps.app.goo.gl/Le6aVv4EURhSCbEr7>

Kosta is situated 73 km west from Kalmar, 40 km from Nybro and 48 km east from Växjö.

The race area and training areas will be held in the area shown in the picture, red line surrounding the areas.

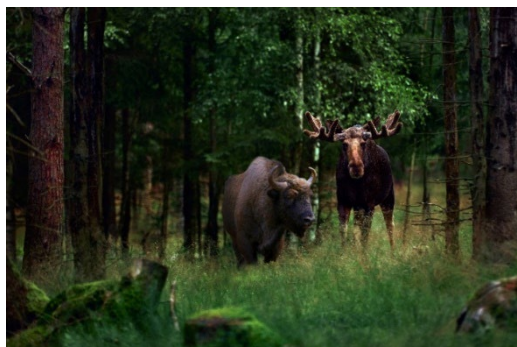


### What else to like ....

At the proximity of event center, you can also find:

**DESTINATION KOSTA**  
EN GLASKLAR UPPLEVELSE

[Destination - Kosta | \(destinationkosta.se\)](http://destinationkosta.se)





**MTBO i  
Glasriket**



ORREFORS  | KostaBoda

Kosta Boda offers inspiring art glass and contemporary interior design objects derived from Swedish design tradition. Targeting modern lifestyle, the progressive assortment delivers premium products integral to everyday use. Did you know? The furnaces at the Kosta glassworks have been lit since 1742.



**Kosta Outlet**

[Kosta Outlet i Småland - upp till 70% billigare](#)



**Målerås Glasbruk**

[Målerås - Crystal handmade in Sweden - Unique form of art glass \(maleras.se\).](#)

“When the first furnace was lit in Målerås 1890, an epoch started where the knowledge and pride in producing fine work has continued through the generations. Målerås Glassworks creates both top quality household glassware and a unique form of art glass.



**Orranäs Glasbruk**

[Orranäs Glasbruk - Glass Art from Småland, Sweden \(orranasglasbruk.se\).](#)





**MTBO i  
Glasriket**



## HOW TO GET TO KOSTA

**Kosta is accessible by plane, train, bus and car.**

### **Directions by train:**

From Gothenburg to Lessebo (SJ Regionaltåg) 3 h 8 min, direct train.

From Malmö to Lessebo (Öresundståg) 2 h 22 min, direct train.

From Stockholm to Alvesta SJ 3 h 6 min, change in Alvesta to Lessebo 33 min, total traveltime 3 h 49 min.

**Distance from Lessebo to Kosta: 15 km by taxi 14 min.**

### **By Air**

From Kalmar – KLR Kalmar-Öland Airport to Kosta 1 h (7 mil).

From Växjö – VXO – Småland Airport to Kosta 45 min (5 mil).

From Kastrup – CPH – Copenhagen Airport to Kosta 3 h (27 mil).

### **Distance:**

Stockholm – Kosta 41 mil – 4 h 42 min

Jönköping – Kosta 15 mil – 1 h 56 min

Lund – Kosta 22 mil – 2 h 42 min

Halmstad – Kosta 18 mil – 2 h 24 min

## **AIRPORTS**

- Kalmar-Öland airport. [Startsida - Kalmar Öland Airport \(kalmarolandairport.se\)](http://Startsida - Kalmar Öland Airport (kalmarolandairport.se))
- Småland airport. [En flygplats.Tusen möjligheter | Växjö Småland Airport AB \(smalandairport.se\)](http://En flygplats.Tusen möjligheter | Växjö Småland Airport AB (smalandairport.se))
- Malmö Sturup airport.
- Copenhagen airport Kastrup.

## **BY CAR TO SWEDEN**

Good connections to Sweden from:

**Denmark:** Ferry from Helsingør to Hälsingborg: Ferry company: Øresundslinjen

**Germany:** Ferry from Rostock to Trelleborg.

**Germany:** By car from the German-Danish border in Padborg across the Great Belt Bridge and further east crossing Denmark to the Oresund bridge and Malmö. From Malmö to Kosta 230 km.

**Polen:** Ferry from Gdynia to Karlskrona. From Karlskrona by car to Kosta 85 km.



**MTBO i  
Glasriket**

**MTBO CAMP**



## PRELIMINARY PROGRAM

Date	Location	Details
<b>Thursday 29 May 2025</b>	<b>Kosta Lodge Arena</b>	Long distance
	<b>Arena glass factory Målerås</b>	Technical training
<b>Friday 30 May 2025</b>	<b>Kosta Lodge Arena</b>	Sprint distance
	<b>Arena Orranäs, Orrefors</b>	Technical training
<b>Saturday 31 May 2025</b>	<b>Kosta Lodge Arena, Kosta-Målerås-Kosta</b>	Ultra long distance a.k.a. "Høkeren"
	<b>Evening</b>	Social event including prize giving at the Event center
<b>Sunday 1 June 2025</b>	<b>Arena Hackebackeskolan, Lessebo</b>	Middle distance

## DISTANCES

All events will take place max. 30 km from the event center.

## ENTRY

Entry will open no later than 15 November 2024.

The ordinary registration period ends 31 March 2025

Later registration is accepted against an increased entry fee, see below.

Your entry is only valid when full payment has been received.

Members of Swedish orienteering clubs must register in Eventor so that payment can be handled through this. All other participants must make their entry on the event website: <http://mtbocamp.dk/mtbo-camp-2025/signup/>

Fill in the required information. Entries will be published on the webpage regularly.

## CLASSES

Your entry class apply for sprint, middle and long distance competitions . You cannot change from one class to another during the camp.

The ultra-long race, will be available in four variants, and you sign up for one of these independently of which class you have signed up for the rest of the camp.

There will be one course for each technical training session.



# MTBO i Glasriket



Classes	
MW-12	
M14	W14
M17	W17
M20	W20
ME	WE
M35	W35
M40	W40
M45	W45
M50	W50
M55	W55
M60	W60
M65	W65
M70	W70
M75	W75
M80	W80
M85	W85

Ultra long	Preliminary length km (straight path)
Long	15
Very long	30
Ultra long	45

## FEES and PAYMENT

Complete MTBO CAMP	M/W-16	M/W-20	M/W 21-
Entry fee until 31 March 2025	€ 20 SEK 230	€ 110 SEK 1250	€ 110 SEK 1250
Entry fee until 30 April 2025	€ 30 SEK 340	€ 125 SEK 1440	€ 125 SEK 1440
Late entry after 30 April 2025	€ 40 SEK 450	€ 145 SEK 1670	€ 145 SEK 1670
SI card - rental for entire camp	€ 20 SEK 230	€ 20 SEK 230	€ 20 SEK 230
Map holder - rental for entire camp	€ 20 SEK 230	€ 20 SEK 230	€ 20 SEK 230





# MTBO i Glasriket



Single races, price per race	M/W-16	M/W-20	M/W 21-
Entry fee until 31 March 2025			
Sprint	€ 9 SEK 100	€ 19 SEK 210	€ 19 SEK 210
Middle	€ 9 SEK 100	€ 19 SEK 210	€ 19 SEK 210
Long	€ 9 SEK 100	€ 19 SEK 210	€ 19 SEK 210
Ultra long	€ 9 SEK 100	€ 40 SEK 450	€ 40 SEK 450
Entry fee until 30 April 2025			
Sprint	€ 12 SEK 125	€ 23 SEK 260	€ 23 SEK 260
Middle	€ 12 SEK 125	€ 23 SEK 260	€ 23 SEK 260
Long	€ 12 SEK 125	€ 23 SEK 260	€ 23 SEK 260
Ultra long	€ 12 SEK 125	€ 45 SEK 510	€ 45 SEK 510
Late entry after 30 April 2025			
Sprint	€ 14 SEK 150	€ 29 SEK 315	€ 28 SEK 315
Middle	€ 14 SEK 150	€ 29 SEK 315	€ 28 SEK 315
Long	€ 14 SEK 150	€ 29 SEK 315	€ 28 SEK 315
Ultra long	€ 14 SEK 150	€ 50 SEK 570	€ 50 SEK 570
SI card – rental for single race	€ 5 SEK 50	€ 5 SEK 50	€ 5 SEK 50
Map holder – rental for single race	€ 5 SEK 50	€ 5 SEK 50	€ 5 SEK 50

## PAYMENT INSTRUCTIONS

### Members of Swedish orienteering clubs:

Payment will be handled automatically when signed up via Eventor.

### All other participants:

Name: Lessebo Orienteringsklubb

Bankgiro 5818-8525

IBAN SE79 8000 0816 9547 3600 1910

BIC SWEDSESS

Participants pay the fee to their own bank, if relevant



**MTBO i  
Glasriket**



## MAPS

Some example will be shown in coming bulletins

## TIME KEEPING SYSTEM

SPORTident touchfree (SIAC) will be used in competitions. All competitors will have to use an SI Card. Rental of SI cards will be possible. Traditional SPORTident cards cannot be used.

## ONE DAY PARTICIPATION

You can of course choose just to participate a single day, just to try our sport. Open courses are the same as those for the competitions.

## SOCIAL EVENT and PRIZE GIVING

We hope to see you at the social event, which will take place Saturday evening nearby the event center.

## VISA

Sweden is a full Schengen member state. Non-Schengen residents may have to apply for a short stay visa.



**MTBO i  
Glasriket**



## ACCOMMODATION

The camp organizers are not responsible for the accommodation. You are responsible for ordering and paying the accommodation you prefer.

## ACCOMODATION AT THE EVENT CENTER

### KOSTA LODGE



Kosta Lodge is located in the middle of Småland's glass kingdom, close to one of Sweden's oldest glass factories. Guests come to us to experience, live and feel good. Kosta Lodge is the event center. [Kosta Lodge - cabins, conference, pitch & fishing in the middle of the Kingdom of Glass](#)



### KOSTA BODA ART HOTEL

**KOSTA  
BODA**  
ART HOTEL  
SWEDEN

#### [Kosta Boda art Hotel](#)

The Hotel is located 1,5 km from the event center. Kosta Boda Art Hotel is the hotel that explodes in colour, form and pleasure. A unique designhotel, decorated by the designers at Kosta Boda and a celebration of Swedish glass art

## CAMPING

There are several camping grounds in the area. See them all at [Camping - Glass Kingdom \(glasriket.se\)](#)

## AUTOCAMPER

Autocampers can stay at Kosta Lodge at the Event Center.



**MTBO i  
Glasriket**



## EATING

There are several local restaurants nearby that you can search online. We will return with more information regarding breakfast.

Here are some examples of restaurants nearby:

Kosta Lodge offers a restaurant.

Kosta Boda Art Hotel offers a restaurant.

Kosta Outlet offers a restaurant.

Målerås Bistro in direct proximity to the glassworks and our training.

## MORE INFORMATION

Webpage <http://www.mtbocamp.dk>

Facebook <https://www.facebook.com/mtbocamp/>  
(Please visit and “like” to get updated information)



## BULLETINS

#2 will be published February 2025

#3 will be published May 2025