



MTBO CAMP

Holstebro, Denmark
13th May – 17th May 2026
Bulletin #2/3

MTBO camp is an early season event, with a lot of MTBO, socializing, high-intensity competitions and low-intensity technical trainings.

Organizer:	Navet MTBO Club
Event director:	Jørn Svensen
Web:	Nordic MTBO Camp
Facebook:	Facebook
Telephone:	+45 40446999
E-mail:	registration@navet-mtb-o.com

Contents

Welcome	2
Organization:.....	2
Venue/Event center	2
Highlights of Western part of Jutland	2
Accommodation.....	3
Price giving.....	3
Rules / Doping	3
Classes	4
Competition information	4
Terrain	5
Wed 13 th May Sprint: Vestre Plantage.....	5
Thu 14 th May Long distance: Stråså	6
Thu 14 th May Flying Mile: Vestre Plantage.....	7

Fri 15 th May Training: Sjørup plantage	8
Fri 15 th May Sprint: Skive Plantage.....	8
Sat 16 th May Ultra Long distance: Klosterheden Plantage.....	9
Sun 17 th May Middle distance: Vestre Plantage.....	11
Maps.....	12
Time keeping	12
Entry fees and deadlines	12
Transportation	14
More information	14

Welcome

Welcome to the 2026 MTBO camp. The organizing team warmly welcome you to this 20th edition of "Danish MTBO camp". It has become a tradition with a season-opening training camp in Denmark/Nordic countries offering mapping and course-setting of the highest standard. The 2026 event will not let you down! On behalf of the organizing team, we welcome you to the Western part of Jutland, Denmark.

Jørn Svensen, Event director

Organization

Club: Navet MTBO Club

Event director: Jørn Svensen

Course setter's: Oliver Friis, Bjarne Hoffmann, Johan MacLassen, Jørn Svensen

Map maker's: Erik Flarup, Melanie Koch Sørensen & Jørn Svensen

Volunteers: Members of Navet MTBO and some good friends from the MTBO environment.

Venue/Event center

EC: There will be no event center. The organization will be at all the races/trainings to make sure you will get the support you need. Emergency number +45 40446999.

The event areas is manned the following hours:

- Wed 13th May: 1500-2000 at the event area.
- Thu 14th May: 0900-1300 at the event area. 1600-2030 at the event area.
- Fri 15th May: 1700-2000 at the event area.
- Sat 16th May: 0800-0900 at the event area.
- Sun 17th May: 0800-1200 at the event area.

Highlights of Western part of Jutland

The Western part of Jutland offers unique nature areas, art and culture, all in a class of their own, and of course lots of attractions you should not miss out on. The experiences are lined up for you and we have gathered some of the highlights for you to explore, on this page

For more information: [15 vestjyske oplevelser som bør prøves - VisitDenmark](#)

Accommodation

The camp organizer is not responsible for the accommodation. We recommend hotels (.com and others), Bed `n` Breakfast, camping sites etc. Of course you can also use your motorhome / camper vans. Please apply to the rules -> [Autocamperfolder - engelsk \(final\).pdf](#)

Price giving / lottery

There will be no prizes for winning our races. Except the honor of course. Instead, we have decided to make a lottery of all our sponsored gifts.

The lottery will take place on Saturday afternoon after the Ultra long distance at the event area. To win the prizes you must be present at the lottery.

For your notice there will a price giving ceremony at the Danish sprint MTBO Championships on the 15th May.

Rules / anti-doping

Riding off the tracks is in general strictly forbidden.

However, riding off tracks in areas with symbol 839, open land (orange) or 839-3 forested area (black dots) is permitted. Riding off tracks are normally forbidden in Denmark.

However, in in the SPRINT on Wednesday, the FLYING MILE on Thursday and the final MIDDLE on Sunday the "Czech off track" model is in place. That means you can go off track, but you have to carry your bike between the tracks on the map. It will only be allowed in these 3 specific races. No riding off track!

MTB tracks are mapped in grey/black. If MTB tracks are unidirectional, riding direction is marked with purple arrows. One-way direction must be respected for safety reasons.

Violation of these rules may, if done deliberately, result in exclusion from the camp without compensation.

The organizers will not be liable for any health insurance for participants. It is recommended that all participants arrange their own personal health insurance. Participation is at own risk. Sales of any kind is not allowed at the competitions or at the Event center unless you have made an agreement with the Event director.

Doping is strictly prohibited.

Program

Day / date	Discipline / Terrain
Wednesday 13 th May	Sprint – World Masters Series <i>Vestre Plantage</i>
Thursday 14 th May	Morning: Mass start - World Masters Series <i>Stråsø Plantage</i> Afternoon: Nordic Flying Mile <i>Vestre Plantage</i>
Friday 15 th May	Mid-day: Technical training <i>Sjørup Plantage</i> Late afternoon: Sprint <i>Skive Plantage</i> Danish Championships 2026
Saturday 16 th May	Ultra Long distance <i>Klosterheden</i>
Sunday 17 th May	Middle distance <i>Vestre Plantage</i>

Classes

These classes apply to the ordinary classes in the international competitions, and your entry applies for all these competitions. You cannot change from one class to another during the Camp. For the technical training there will be three different courses with free choice on the day.

Courses	Classes
1	ME
2	WE / MJ / M35 / M40 / M45
3	MY / M50 / M55
4	WJ / W35 / W40 / W45 / M60 / M65
5	WY / W50 / W55 / W60 / W65 / M70/W70 / W75 / M75 / M80 / M85
6	W-14 / M-14
7	W-12 / M-12

Competition information

World Masters Series races will be sprint on Wednesday, 13th of May and Mass start on Thursday 14th of May. The sprint on the 15th of May is also the 2026 Danish Championships.

Terrain

Wednesday 13th May

Sprint [WMS]: Vestre Plantage.

Venue: <https://maps.app.goo.gl/Ua6jxUcPG7cWyzar8>

Direction: Signs from

<https://maps.app.goo.gl/LvR8bKhdzmzFksHFd8>

Crossing between Skjernvej and Harrestrupvej.

Map: Vestre Plantage 2026 1:5000, 2,5 m A3 size.

Course setter: Oliver Friis

Courses:

Course 1: 7470 m, 18c

Course 2: 6950 m, 17c

Course 3: 6550 m, 17c

Course 4: 5750 m, 16c

Course 5: 5000 m, 18c

Course 6: 4730 m, 13c

Course 7: 4160 m, 10c

Start: 1700-1900 hrs.

All riders must be finished at **2000** hrs.

Max time: 60 min.

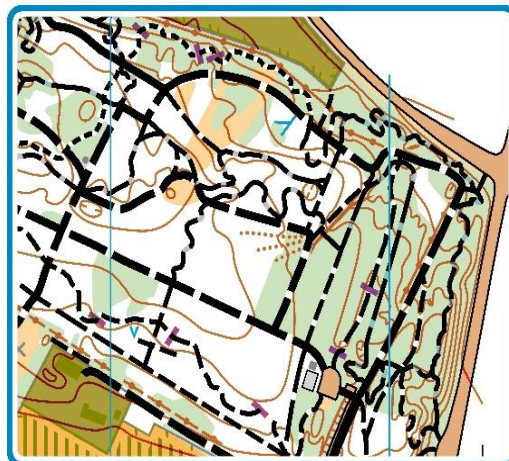
Event area-start: 100 m Follow: White/Red/Blue ribbons

Toilets: At the start

Parking-Event area: 100-300 m Follow: Yellow/Green Ribbons.

Parking: Only in the red circles. Start parking at number 1 etc.

Parking in the red squares is strictly prohibited.



Thursday 14th May

Mass start [WMS]: Stråsø

Venue: <https://maps.app.goo.gl/sE7vCgQGq5zq1sR27>

Direction: Signs from

<https://maps.app.goo.gl/nimxBQNx7Ajr2cps7>

Crossing between Råstedvej and Fuglsangvej

Map: Stråsø 2026 1:10000, 2,5 m A3 size.

Course setter: Oliver Friis

Courses:

Course 1: 21590 m, 21c MAPFLIP

Course 2: 18070 m, 18c MAPFLIP

Course 3: 15580 m, 23c MAPFLIP

Course 4: 14460 m, 20c MAPFLIP

Course 5: 12039 m, 17c

Course 6: 10730 m, 12c

Course 7: 8970 m, 8c

Start: 1100-1130 hrs.

All riders must be finished at **1400** hrs.

Max time: 150 mins.

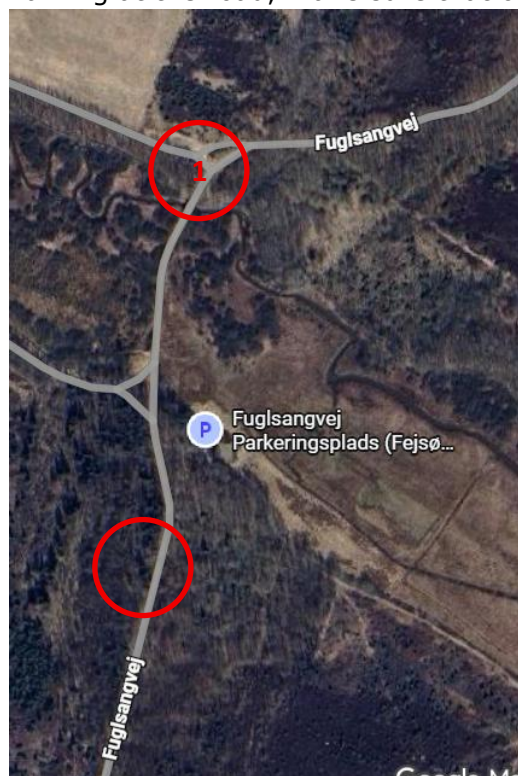
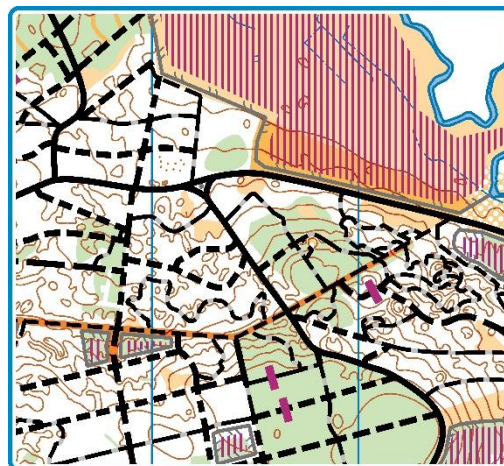
Event area-start: 1000 m.

Toilets: At venue

Parking-Event area: 300 m Follow: Yellow/Green Ribbons.

Parking: Place is limited, so make sure to get close to each other. In the red circles. Mobil homes has to park at parking number 1.

Parking at the road, make sure that other vehicles can pass you.



Thursday 14th May

Flying Mile: Vestre Plantage Nord

Venue: <https://maps.app.goo.gl/JSHnnhKBosF3SRXp6>

Direction: Signs from

<https://maps.app.goo.gl/shWyjFt5miKVtuHz8>

Crossing between Kasernevej and Idomvej.

Map: Vestre Plantage Nord 2026 1:1500, 2,5 m A3 size.

Course setter: Jørn Svensen

Men course: One flying mile. 20 controls

Women course: One Flying mile. 18 controls

Start: 1700-1830 hrs. Free start.

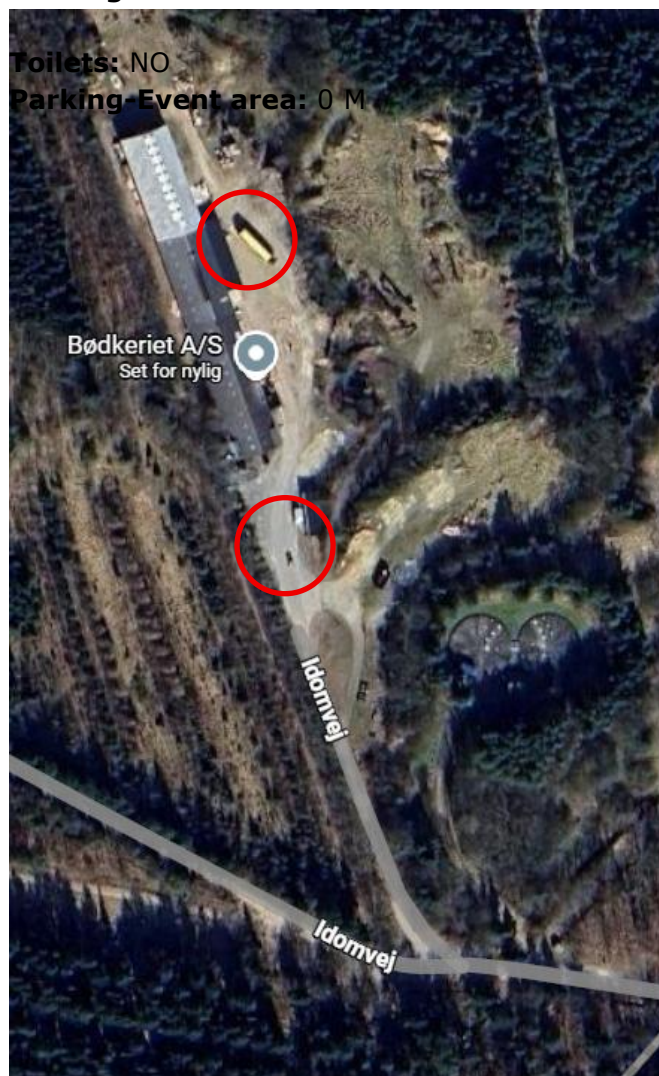
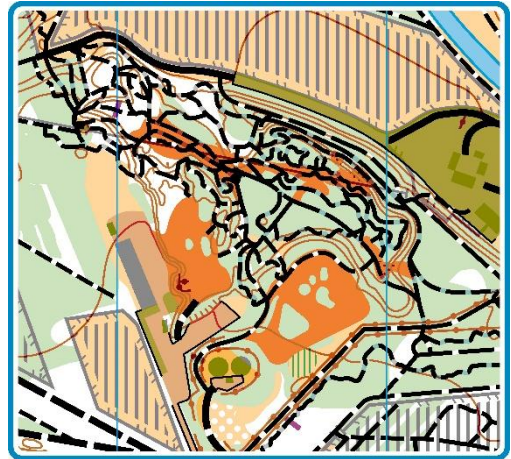
Info: 50 m from start to start point. Controls are very close to each other in the forest. Check control numbers!!!

All riders must be finish at **1900** hrs.

Event area-start: 600 m Follow: White/red/Blue ribbons.

Toilets: Not available.

Parking-Event area: 0 m



Friday 15th May

Training: Sjørup Plantage

Venue: <https://maps.app.goo.gl/3BuebgA26dN3QYv26>

Direction: Signs from

<https://maps.app.goo.gl/DfAvtyANV8YycYRm9>

Holstebrovej

Map: Sjørup Plantage 2026 1:10000, 2,5 m A3 size.

Course setter: Johan MacLassen

Courses:

Technical training in Sjørup consists of two parts

Part 1: Advanced route choice - a normal MTBO course but closed off tracks, one way tracks and other obstacles, making it challenging to find the way through the "maze"

Part 2: Memo-challenge - A map memory course, there will be a map sample at every control showing the next two controls, giving you the option to memorize one or two controls a time, to challenge you own skills.

Start: 1000-1300

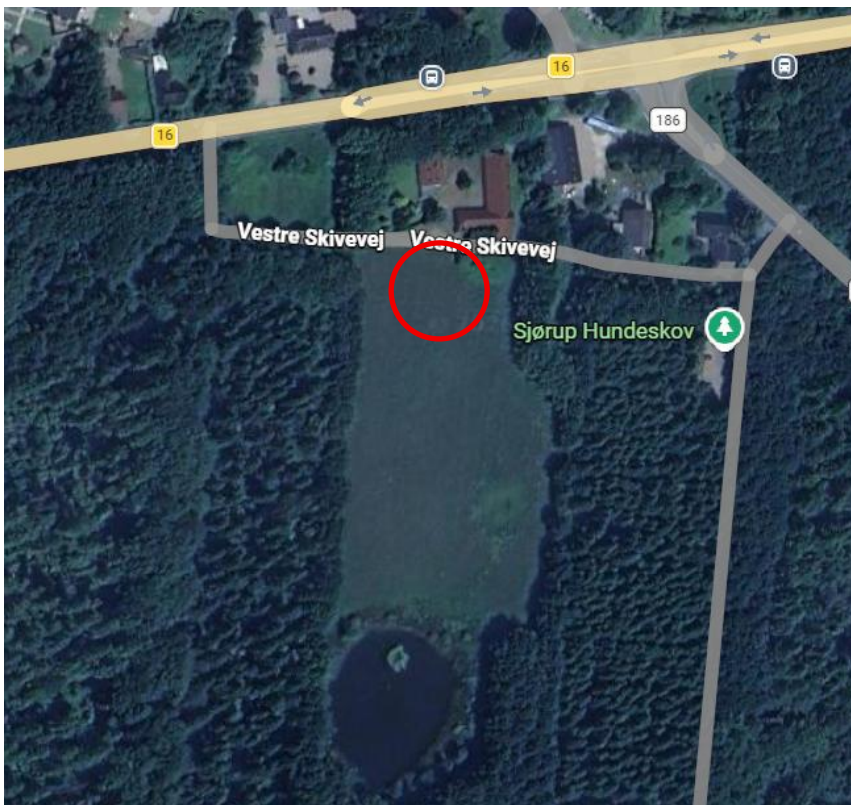
All riders must be finish at **1430** hrs.

Parking-Event area: 0 m

Event area-start: 0 m

Toilets: Not available.

Parking-Event area: 0 m



Friday 15th May

Sprint: Skive Plantage

Venue: <https://maps.app.goo.gl/QSXVuUZ6NpfLPvMB6>

Direction: Signs from:

<https://maps.app.goo.gl/u8zXLRM81rjzZ1G5A>

Map: Skive Plantage 2026 1:5000 2,5 m A3 size.

Course setter: Johan MacLassen

Courses:

Course 1: 6860 m, 21c MAPFLIP

Course 2: 6860 m, 21c MAPFLIP

Course 3: 5820 m, 19c MAPFLIP

Course 4: 5070 m, 19c MAPFLIP

Course 5: 5070 m, 19c MAPFLIP

Course 6: 4170 m, 14c MAPFLIP

Course 7: 2690 m, 15c

Start Danish Championship: Start 1730-1830 hrs.

Start the rest of MTBO Camp: Start 1830-1915 hrs.

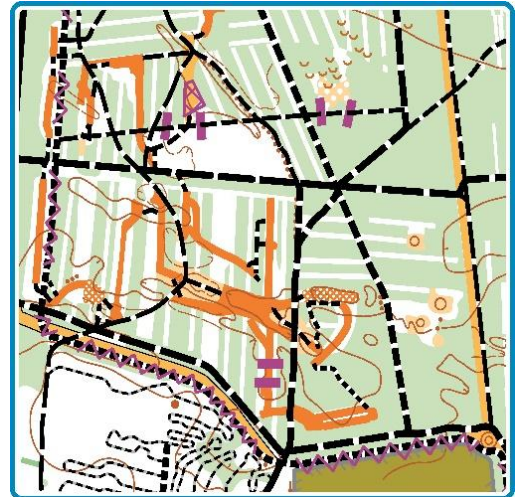
All riders must finish at **2015** hrs.

Event area-start: 2800 m Follow: White/red/Blue ribbons.

Toilets: Yes

Max time: 60 mins.

Parking-Event area: 0-200 m



Saturday 16th May

Ultra Long distance: Klosterheden Plantage

Venue: <https://maps.app.goo.gl/kmGxQBcsgkren2bPA>

Direction:

<https://maps.app.goo.gl/89qitwMW7EYhSjwn7>

Crossing between Fabjergkirkevej and Sandehusvej.

Map: Klosterheden Plantage 2026 1:15000, 2,5 m A3 size.

Course setter: Bjarne Hoffmann

Courses:

Ultra long 64 km 42 controls, 5 maps

Map 2: 9 free order controls (control 3-11 is free order. MUST start and end with Control 2/12-180)

Map 5: 13 free order controls, between control 27-41.

Very long 50 km 41C, 4 maps

Map 1: 8 free order controls before control #9

Map 4: 10 free order controls, between control #29 and #40

Long 37 km, 34C, 3 maps

Map 1: 8 free order controls before control #9

Map 3: 10 free order between control #22 and #33

Easy 29 km, 15C, 2 maps

(Easy 16 km 10c by skipping control 3-6)

No free order

Water:

Two water stations with clean water will be set up - self-service. These stations are marked on the race map with a water symbol. The stations are located on major gravel roads and in connection with natural route choices.

In addition, there is the possibility of water at the passage of spectator control/finish after approximately:

Ultra long at 50 km / Very long at 40 km / Long at 30 km.

Here the rider can place his/her refreshments.

Start:

1100 hrs. Ultra +Easy

1110 hrs. Very long

1120 hrs. Long

All riders must be ready at the start 10 mins before your start time for the hand out of maps

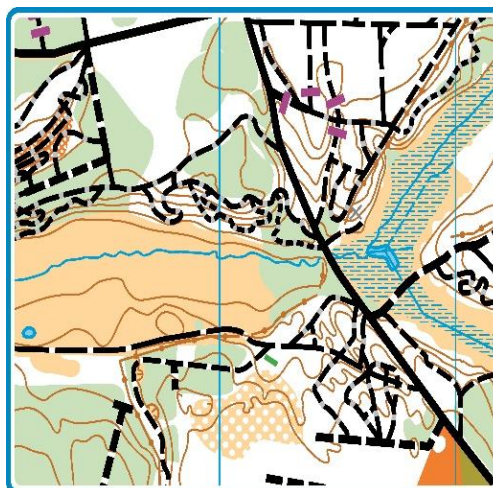
All riders must be finished at no later than 1520 hrs.

Max time: 240 min.

Event area-start: 100 m Follow: White/red/Blue ribbons

Toilets: Yes at the arena

Parking-Event area: 0 n





Sunday 17th May

Middle distance: Vestre Plantage

Venue: <https://maps.app.goo.gl/Ua6jxUcPG7cWyzar8>

Direction: Signs from

<https://maps.app.goo.gl/LvR8bKhdmzFksHFd8>

Crossing between Skjernvej and Harrestrupvej.

Map: Vestre Plantage 2026 1:5000, 2,5 m A3 size.

Course setter: Bjarne Hoffmann

Courses:

Course 1: 15180 m, 27c MAP FLIP

Course 2: 13730 m, 23c MAPFLIP

Course 3: 11710 m, 22c MAPFLIP

Course 4: 10930 m, 21c MAPFLIP

Course 5: 7810 m, 16c

Course 6: 3110 m, 10c

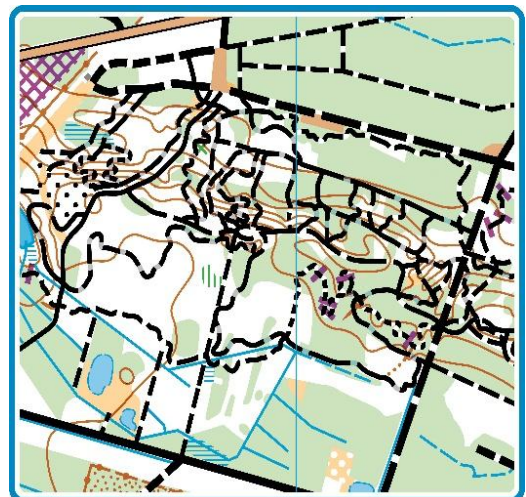
Course 7: 2680 m, 9c

Start: 1000-1200 hrs.

Controls will be collected at no later than 1330 hrs.

Parking-Event area: 300 m

Event area-start: 300 m Follow: White/red/Blue ribbons



Toilets: Yes

Parking: Only in the red circles. Start parking at number 1 etc.

Parking in the red squares is strictly prohibited.



Maps

The maps are produced in accordance with the International Standard for Mountain Bike Orienteering Maps ISMTBOM 2022. All maps are updated spring 2026.

Time keeping

SPORTident touch free short range will be used in all competitions/trainings. All competitors will have to use an SI Card suitable for touch free is needed. SI card rental will be possible in the event office.

Entry fees and deadlines

Ordinary registration expired on the 15th April 2026. Extended registration according to the

table further down. Number of participants is limited to 300.

For participation in MTBO camp 2026 there are the following options:

For both options you may register in alternative age classes, according to IOF rules.

Participants from Denmark: Use "O-service" and specify type of camp (Full Camp/Short Camp) and the price will be adjusted accordingly.

Complete MTBO camp	M/W-14	M/W-20	M/W21-
Entry fee until 15th April 2026	EUR 25	EUR 95	EUR 125
Per person/participant	DKK 190	DKK 710	DKK 940
Late entry after 15th April 2026	EUR 25	EUR 110	EUR 145
Per person/participant	DKK 190	DKK 825	DKK 1090
SI card – rental for all competitions	EUR 20	EUR 20	EUR 20
	DKK 150	DKK 150	DKK 150
Masters Series	M/W-14	M/W-20	M/W21-
Entry fee until 15 April 2026	EUR 20	EUR 70	EUR 70
Per person/participant			
SI card – rental for all competitions	EUR 20	EUR 20	EUR 20

M/W-12 participate for free.

Withdrawals will be accepted as follow:

- Until 15th of March 2026: Withdrawals receive a 50 % refund.
- After 15th of April 2026, withdrawals will not be accepted.

Complete camp

All participants in the complete camp (also Danish participants) must make their entry on the event using below link.

<http://mtbocamp.dk/mtbo-camp-2021/signup/>

Fill in the required information. Entries are published on the website immediately.

Payment details for Danish participants **not member** of an orienteering club:

Reg.nr. 9570 Account no. 13198012

Write your name on the transfer.

Payment details for foreign entries:

IBAN: DK 2130000013198012

Account holder: Navet

Address: Vestergade 3, 8600 Silkeborg

SWIFT/BIC: DABADKKK

Bank: Danske Bank

Participants pay the fee to own bank.

In case of cancellation of the event due to e.g. Corona restrictions. The organizer will uphold the transfer in the entry fee for transferring the money back to foreign participants.

Catering

There will be no kiosk or similar at the arenas. We recommend to bring your own water, snacks, food etc.

Transportation

The organizer do not offer transportation during the camp. Competitors/participants must arrange own transportation.

Entry permits - Visas

Denmark is a full Schengen member state. Non-Schengen residents may have to apply for a short stay visa.

More information

Webpage <http://www.mtbocamp.dk>

Facebook <https://www.facebook.com/mtbocamp/>

Please visit and "like" to get regular updated information.

